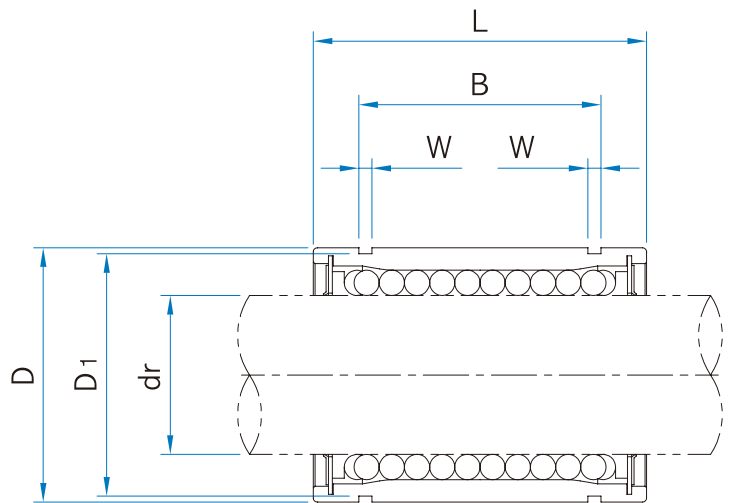


LM Series



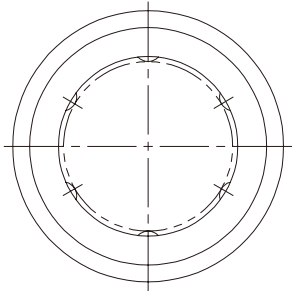
Unit : mm

LM Series						Basic Load Ratings		Working Bore Diameter	
Standard type		Open type(OP)		Adjustable type(AJ)		Dyn	Stat.		
Part No.	No. of Ball circuit	Part No.	No. of Ball circuit	Part No.	No. of Ball circuit	C (N)	Co (N)	dr (mm)	Tol. (μm)
LM4UU	4	—	—	—	—	88	127	4	0 -8
LM5UU	4	—	—	—	—	167	206	5	0 -8
LM6UU	4	—	—	LM6UUAJ	4	206	265	6	0 -9
LM8SUU	4	—	—	LM8SUUAJ	4	176	216	8	
LM8UU	4	—	—	LM8UUAJ	4	274	392	8	
LM10UU	4	—	—	LM10UUAJ	4	372	549	10	
LM12UU	4	LM12UUOP	3	LM12UUAJ	4	510	784	12	
LM13UU	4	LM13UUOP	3	LM13UUAJ	4	510	784	13	
LM16UU	5	LM16UUOP	4	LM16UUAJ	5	774	1180	16	0 -10
LM20UU	5	LM20UUOP	4	LM20UUAJ	5	882	1370	20	
LM25UU	6	LM25UUOP	5	LM25UUAJ	6	980	1570	25	
LM30UU	6	LM30UUOP	5	LM30UUAJ	6	1570	2740	30	0 -12
LM35UU	6	LM35UUOP	5	LM35UUAJ	6	2160	3140	35	
LM40UU	6	LM40UUOP	5	LM40UUAJ	6	3820	4020	40	
LM50UU	6	LM50UUOP	5	LM50UUAJ	6	3820	7400	50	0 -15
LM60UU	6	LM60UUOP	5	LM60UUAJ	6	4700	10000	60	

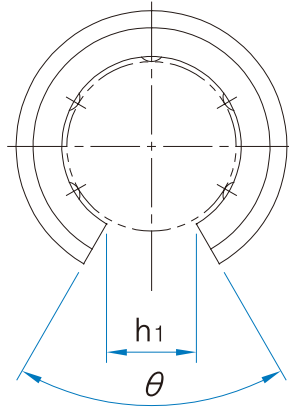
Note) Plating and Raydent treatment are available

1N ≒ 0.102kgf

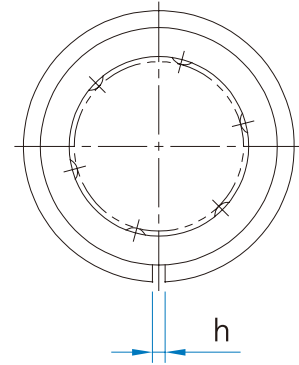
LM Series



LM



LM□OP



LM□AJ

Unit : mm

Dimensions (mm)											Weight * (g)	Allowable Diametral Clearance (μm)	Part No.		
D (mm)	Tol. (μm)	L (mm)	Tol. (mm)	B (mm)	Tol. (mm)	W	D ₁	h	h ₁	θ (°)					
8	$\begin{matrix} 0 \\ -9 \end{matrix}$	12	$\begin{matrix} 0 \\ -0.12 \end{matrix}$	—	—	—	—	—	—	—	2	-3	LM4UU		
10	$\begin{matrix} 0 \\ -9 \end{matrix}$	15	$\begin{matrix} 0 \\ -0.12 \end{matrix}$	10.2	$\begin{matrix} 0 \\ -0.2 \end{matrix}$	1.1	9.6	—	—	—	4	-3	LM5UU		
12	$\begin{matrix} 0 \\ -11 \end{matrix}$	19	$\begin{matrix} 0 \\ -0.2 \end{matrix}$	13.5		1.1	11.5	1	—	—	8.5	-3	LM6UU		
15		17		11.5		1.1	14.3	1	—	—	11	-3	LM8SUU		
15	24	17.5		1.1		14.3	1	—	—	17	-3	LM8UU			
19	$\begin{matrix} 0 \\ -13 \end{matrix}$	29		$\begin{matrix} 0 \\ -0.3 \end{matrix}$		22	1.3	18	1	6.8	80°	36	-4	LM10UU	
21		30				23	1.3	20	1.5	8	80°	42	-4	LM12UU	
23		32				23	1.3	22	1.5	9	80°	49	-4	LM13UU	
28	37	26.5				1.6	27	1.5	11	80°	76	-6	LM16UU		
32	$\begin{matrix} 0 \\ -16 \end{matrix}$	42				$\begin{matrix} 0 \\ -0.4 \end{matrix}$	30.5	1.6	30.5	1.5	11	60°	100	-6	LM20UU
40		59					41	1.85	38	2	12	50°	240	-6	LM25UU
45		64			44.5		1.85	43	2.5	15	50°	270	-8	LM30UU	
52	$\begin{matrix} 0 \\ -19 \end{matrix}$	70	$\begin{matrix} 0 \\ -0.3 \end{matrix}$		49.5		2.1	49	2.5	17	50°	425	-8	LM35UU	
60		80			60.5		2.1	57	3	20	50°	654	-10	LM40UU	
80		100			74		2.6	76.5	3	25	50°	1700	-13	LM50UU	
90	$\begin{matrix} 0 \\ -22 \end{matrix}$	110		85	3.15		86.5	3	30	50°	2000	-13	LM60UU		

* Based on Standard type

1N \approx 0.102kgf