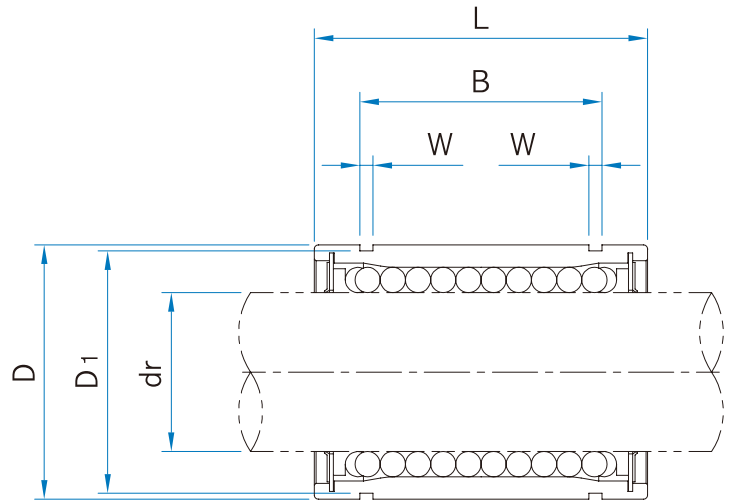


LME Series



Unit : mm

| LM Series | | | | | | Basic Load Ratings | | Working Bore Diameter | |
|---------------|---------------------|---------------|---------------------|---------------------|---------------------|--------------------|--------------|-----------------------|-----------|
| Standard type | | Open type(OP) | | Adjustable type(AJ) | | Dyn C (N) | Stat. Co (N) | dr (mm) | Tol. (μm) |
| Part No. | No. of Ball circuit | Part No. | No. of Ball circuit | Part No. | No. of Ball circuit | | | | |
| LME5UU | 4 | - | - | LME5UUAJ | 4 | 206 | 265 | 5 | +8 0 |
| LME8UU | 4 | - | - | LME8UUAJ | 4 | 265 | 402 | 8 | |
| LME12UU | 4 | LME12UUOP | 3 | LME12UUAJ | 4 | 510 | 784 | 12 | |
| LME16UU | 5 | LME16UUOP | 4 | LME16UUAJ | 5 | 578 | 892 | 16 | +9 -1 |
| LME20UU | 5 | LME20UUOP | 4 | LME20UUAJ | 5 | 862 | 1370 | 20 | |
| LME25UU | 6 | LME25UUOP | 5 | LME25UUAJ | 6 | 980 | 1570 | 25 | +11 -1 |
| LME30UU | 6 | LME30UUOP | 5 | LME30UUAJ | 6 | 1570 | 2740 | 30 | |
| LME40UU | 6 | LME40UUOP | 5 | LME40UUAJ | 6 | 2160 | 4020 | 40 | +13 -2 |
| LME50UU | 6 | LME50UUOP | 5 | LME50UUAJ | 6 | 3820 | 7940 | 50 | |
| LME60UU | 6 | LME60UUOP | 5 | LME60UUAJ | 6 | 4700 | 9800 | 60 | |

1N ≙ 0.102kgf

Note) Plating and Raydent treatment are available

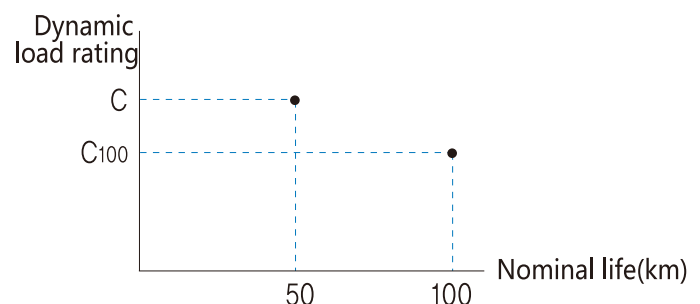
Reference of dynamic load rating

Dynamic load rating is based on the nominal life of 50km.

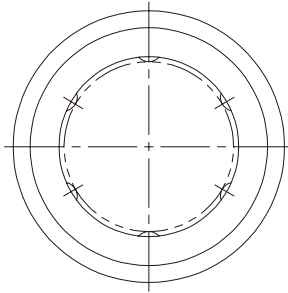
In case of 100km, C on the table needs to be divided by 1.26

ex) LME 20 C : 860 N C₁₀₀ : 682 N

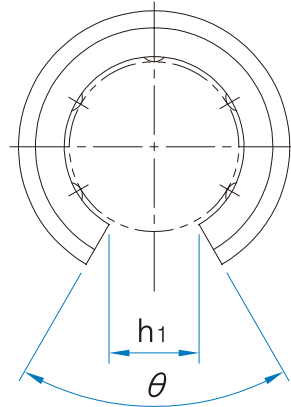
$$L = \left(\frac{C}{P}\right)^3 \times 50 \text{ km}, L = \left(\frac{C_{100}}{P}\right)^3 \times 100 \text{ km},$$



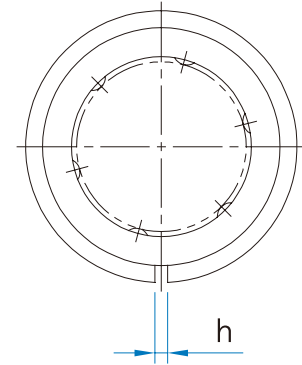
LME Series



LME



LME□OP



LME□AJ

Unit : mm

| Dimensions(mm) | | | | | | | | | | | Weight [※] (g) | Allowable Diametral Clearance (μ m) | Part No. |
|----------------|--------------------|-----------|--------------|-----------|--------------|------|----------------|------|----------------|--------------|----------------------------|---|----------|
| D (mm) | Tol. (μ m) | L (mm) | Tol. (mm) | B (mm) | Tol. (mm) | W | D ₁ | h | h ₁ | θ (°) | | | |
| 12 | 0 | 22 | 0 | 14.5 | 0 | 1.1 | 11.5 | 1 | — | — | 11 | -3 | LME5UU |
| 16 | -8 | 25 | | 16.5 | | 1.1 | 15.2 | 1 | — | — | 22 | -3 | LME8UU |
| 22 | 0 | 32 | -0.2 | 22.9 | -0.3 | 1.3 | 21 | 1.5 | 7.5 | 78° | 45 | -4 | LME12UU |
| 26 | -9 | 36 | | 24.9 | | 1.3 | 24.9 | 1.5 | 10 | 78° | 60 | -4 | LME16UU |
| 32 | 0 | 45 | 0 | 31.5 | 0 | 1.6 | 30.3 | 2 | 10 | 60° | 102 | -6 | LME20UU |
| 40 | | -11 | | 58 | | 44.1 | 1.85 | 37.5 | 2 | 12.5 | 60° | 235 | -6 |
| 47 | 0 | 68 | 0 | 52.1 | -0.4 | 1.85 | 44.5 | 2 | 12.5 | 50° | 360 | -8 | LME30UU |
| 62 | | -9 | | 80 | | 60.6 | 2.15 | 59 | 3 | 16.8 | 50° | 770 | -8 |
| 75 | -13 | 100 | -0.3 | 77.6 | -0.4 | 2.65 | 72 | 3 | 21 | 50° | 1250 | -13 | LME50UU |
| 90 | 0 | 125 | | 101.7 | | 3.15 | 86.5 | 3 | 27.2 | 54° | 2220 | -13 | LME60UU |

※ Based on Standard type

1N \doteq 0.102kgf