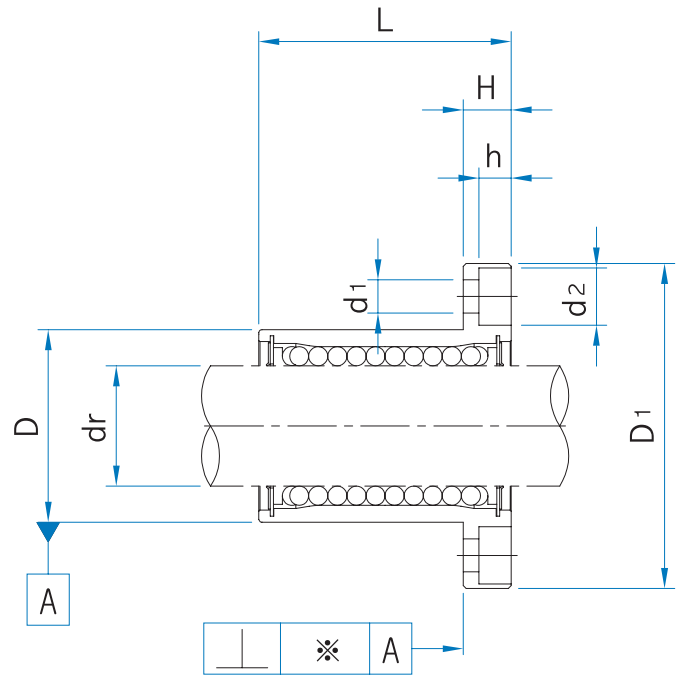


# Linear Ball Bushing



## LMF/K/H Series

Flange•Type



Unit : mm

Part No.			No. of Ball circuit	Weight <sup>*</sup> (g)	Allowable Diametral Clearance (μm)	Basic Load Ratings		Working Bore Diameter	
Circular type	Square type	Oval type				Dyn. C (N)	Stat. Co (N)	dr (mm)	To l. (μm)
LMF6UU	LMK6UU	-	4	24	-3	206	265	6	0 -9
LMF8UU	LMK8UU	-	4	37	-3	274	392	8	
LMF10UU	LMK10UU	LMH10UU	4	72	-4	372	549	10	
LMF12UU	LMK12UU	LMH12UU	4	76	-4	510	784	12	
LMF13UU	LMK13UU	LMH13UU	4	88	-4	510	784	13	
LMF16UU	LMK16UU	LMH16UU	5	120	-6	774	1180	16	
LMF20UU	LMK20UU	LMH20UU	5	180	-6	882	1370	20	0 -10
LMF25UU	LMK25UU	LMH25UU	6	340	-6	980	1570	25	
LMF30UU	LMK30UU	LMH30UU	6	470	-8	1570	2740	30	
LMF35UU	LMK35UU	-	6	650	-8	1670	3140	35	0 -12
LMF40UU	LMK40UU	-	6	1060	-10	2160	4020	40	
LMF50UU	LMK50UU	-	6	2200	-13	3820	7940	50	
LMF60UU	LMK60UU	-	6	3000	-13	4700	10000	60	0 -15

Note) Plating and Raydent treatment are available

\* The value of Circular type

1N ≙ 0.102kgf