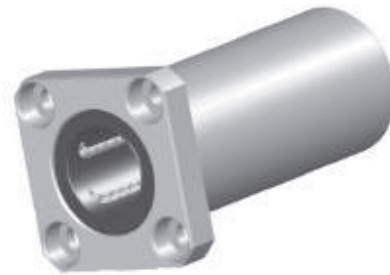


LMF/K□L Series

Flange•Type



LMF□L



LMK□L

Unit : mm

Part No.		No. of Ball circuit	Weight ※ (g)	Allowable Diametral Clearance (μm)	Basic Load Ratings		Working Bore Diameter	
Circular type	Square type				Dyn. C (N)	Stat. Co (N)	dr (mm)	To l. (μm)
LMF6LUU	LMK6LUU	4	31	-3	323	529	6	0 -10
LMF8LUU	LMK8LUU	4	51	-3	431	784	8	
LMF10LUU	LMK10LUU	4	98	-4	588	1100	10	
LMF12LUU	LMK12LUU	4	110	-4	813	1570	12	
LMF13LUU	LMK13LUU	4	130	-4	813	1570	13	
LMF16LUU	LMK16LUU	5	190	-6	1230	2350	16	0 -12
LMF20LUU	LMK20LUU	5	260	-6	1400	2740	20	
LMF25LUU	LMK25LUU	6	540	-6	1560	3140	25	
LMF30LUU	LMK30LUU	6	680	-8	2490	5490	30	0 -15
LMF35LUU	LMK35LUU	6	1020	-8	2650	6270	35	
LMF40LUU	LMK40LUU	6	1570	-10	3430	8040	40	
LMF50LUU	LMK50LUU	6	3600	-13	6080	15900	50	0 -20
LMF60LUU	LMK60LUU	6	4500	-13	7550	20000	60	

Note) Plating and Raydent treatment are available

* The value of Circular type

1N ≒ 0.102kgf