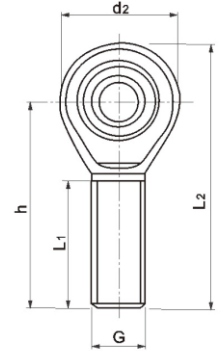
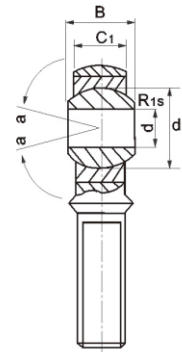


## Self-lubricating rod end bearings male thread steel on ptee-metallic fabric maintenance free series

### SA...T/K

- Rod bod with right or left-hand male thread
- It is made up of a maintenance-free radial sphericalplain bearing G..PW and rod body
- Surface of rod body zinc plated



PART NO	Dimensions (mm)											Load Ratings (KN)		Weight ≈kg
	d	B	dk	C1 max	d2 max	G 6H	h	L1 min	L2 max	R1s	a° ≈	dyn C	stat C0	
SA5T/K	5	8	11.11	6	18	M5×0.8	33	19	42	0.3	13	5.7	6.0	0.013
SA6T/K	6	9	12.7	6.75	20	M6×1.0	36	21	46	0.3	13	7.2	7.65	0.02
SA8T/K	8	12	15.875	9	24	M8×1.25	42	25	54	0.3	14	11.6	12.9	0.038
SA10T/K	10	14	19.05	10.5	28	M10×1.5	48	28	62	0.3	13	14.5	18.0	0.055
SA12T/K	12	16	22.225	12	32	M12×1.75	54	32	70	0.3	13	17	24	0.85
SA14T/K	14	19	25.4	13.5	38	M14×2.0	60	36	78	0.3	16	24	31	0.14
SA16T/K	16	21	28.575	15	42	M16×2.0	66	37	87	0.3	15	28.5	39	0.21
SA18T/K	18	23	31.75	16.5	46	M18×1.5	72	41	94	0.3	15	42.5	47.5	0.29
SA20T/K	20	25	34.925	18	50	M20×1.5	78	45	103	0.3	14	42.5	57	0.38
SA22T/K	22	28	38.1	20	54	M22×1.5	84	48	111	0.3	15	57	68	0.48
SA25T/K	25	31	42.85	22	60	M24×2	94	55	124	0.3	15	68	85	0.64
SA28T/K	28	35	47.6	24	66	M27×2	103	62	136	0.3	15	86	107	0.8
SA30T/K	30	37	50.8	25	70	M30×2	110	66	145	0.3	17	88	114	1.1
SA35T/K	35	43	57.1	28	81	M36×3	140	85	180.5	0.3	16			1.64

For left-hand thread, please add surfix \* L" .e.g. SAL 16 T/K.