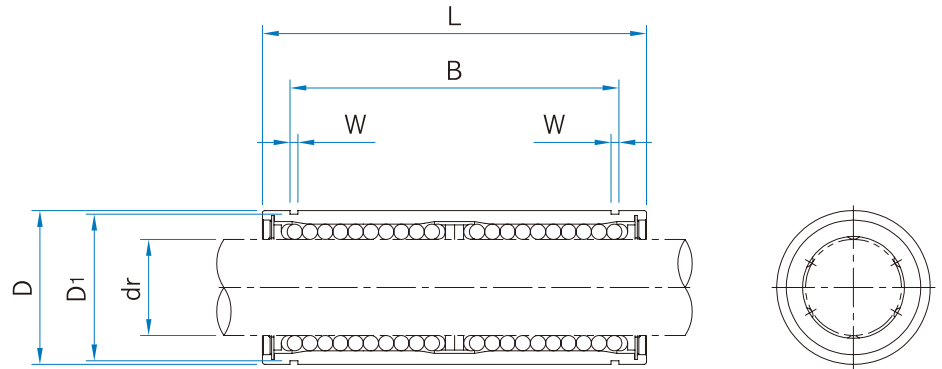


## LM□L / LME□L Series



Unit : mm

LM□L Series		Working Bore Diameter		Dimensions (mm)								※ Basic Load Ratings		
Part No.	No. of Ball circuit	dr (mm)	ToI. (μm)	D		L		B		W	D <sub>1</sub>	Weight (g)	Dyn. C (N)	Stat. C <sub>0</sub> (N)
				(mm)	ToI. (μm)	(mm)	ToI. (mm)	(mm)	ToI. (mm)					
LM6LUU	4	6	-10	12	0	35	0	27	-0.4	1.1	11.5	16	320	520
LM8LUU	4	8		15	-13	45		35		1.1	14.3	31	431	784
LM10LUU	4	10		19	0	55		44		1.3	18	62	588	1100
LM12LUU	4	12		21	0	57		46		1.3	20	80	813	1570
LM13LUU	4	13		23	-16	61		46		1.3	22	90	813	1570
LM16LUU	5	16		28	0	70		53		1.6	27	145	1230	2350
LM20LUU	5	20	32	0	80	61	1.6	30.5	180	1400	2740			
LM25LUU	6	25	40	-12	112	82	1.85	38	440	1560	3140			
LM30LUU	6	30	45	0	123	89	1.85	43	480	2490	5490			
LM35LUU	6	35	52	0	135	99	2.1	49	795	2650	6270			
LM40LUU	6	40	60	-15	151	121	2.1	57	1170	3430	8040			
LM50LUU	6	50	80	0	192	148	2.6	76.5	3100	6080	15900			
LM60LUU	6	60	90	-20	209	170	3.15	86.5	3500	7550	20000			
LME□L Series														
LME8LUU	4	8	+9	16	0	46	0	33	-0.4	1.1	15.2	40	421	804
LME12LUU	4	12	-1	22	0	61		45.8		1.3	21	80	813	1570
LME16LUU	5	16	+11	26	-11	68		49.8		1.3	24.9	115	921	1780
LME20LUU	5	20	-1	32	0	80	61	1.6	30.5	180	1370	2740		
LME25LUU	6	25	+13	40	-13	112	82	1.85	38	430	1570	3140		
LME30LUU	6	30	-2	47	0	123	104.2	1.85	44.5	615	2500	5490		
LME40LUU	6	40	+16 -4	62	0	151	0	121.2	-0.5	2.15	59	1400	3430	8040
LME50LUU	6	50		75	-15	192		155.2		2.65	72	2320	6080	15900
LME60LUU	6	60		90	0	209		170		3.15	86.5	3900	7550	20000

Note) Plating and Raydent treatment are available

1N ≒ 0.102kgf